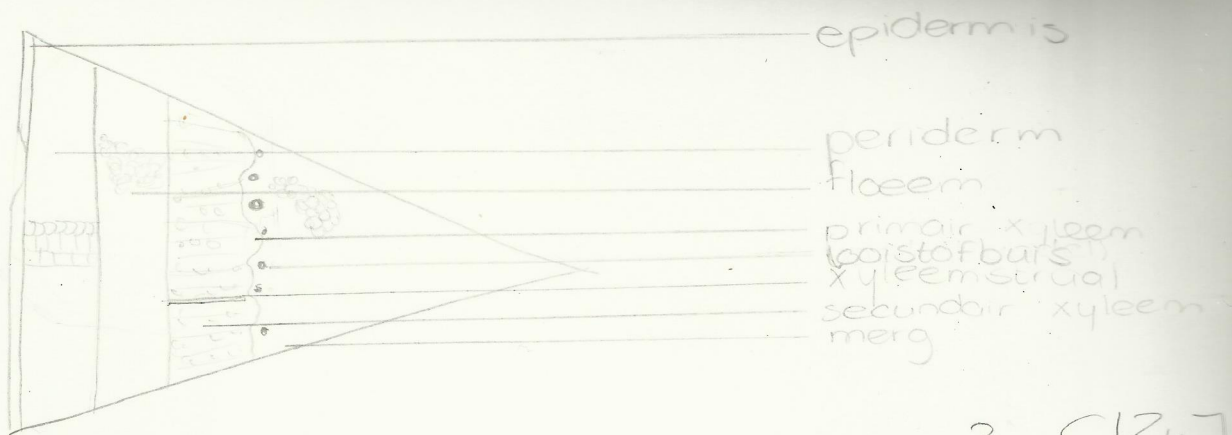


Dwarsdoorsnede van de stam

40 x



? ClZuJ
Fluoglucane/
HCl

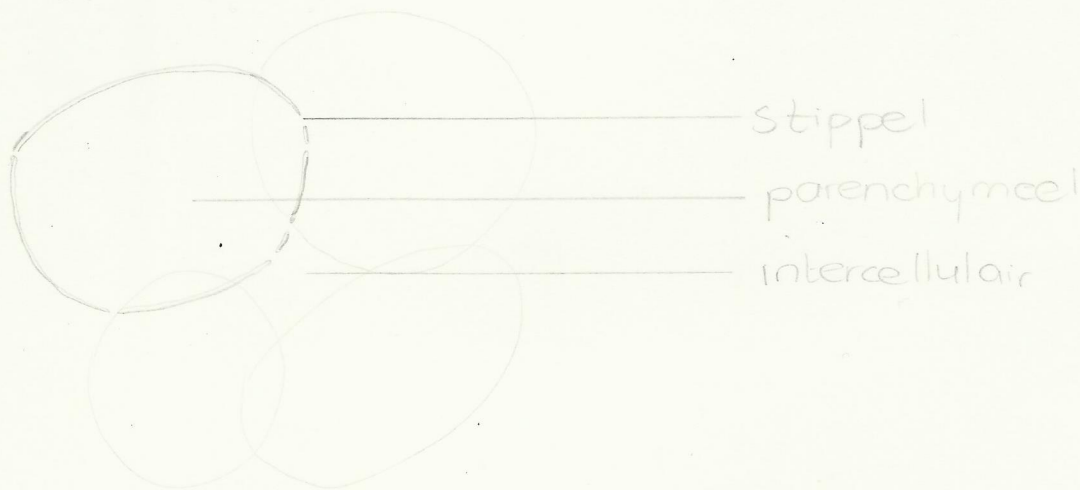
Plantae

Sambucus nigra

stippels

detail: mergparenchymcellen met en intercellulair; dwarsdoorsnede

400 x

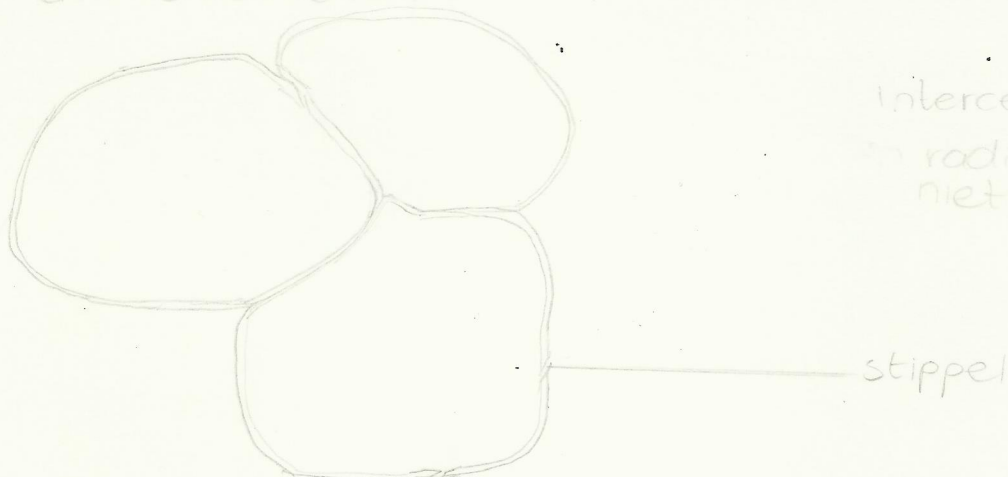


Plantae

Sambucus nigra

detail: radiale doorsnede v. mergparenchymcellen met stippels en intercellulair

x



intercellulair in deze
in radiale doorsnede
niet te zien

stippel